

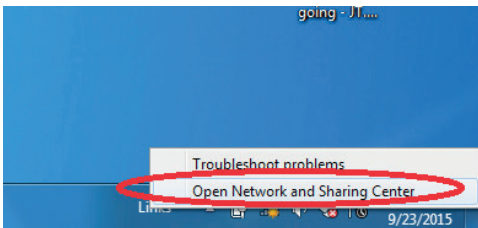
TAFE_OPEN WIFI SETUP WINDOWS 7



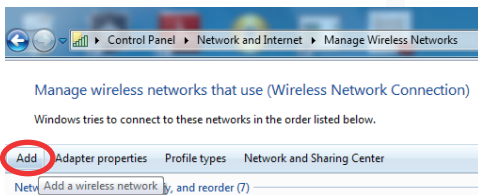
Steps to Connect to TAFE_OPEN

A wireless network profile must be manually created in order to connect to the TAFE_OPEN wireless network.

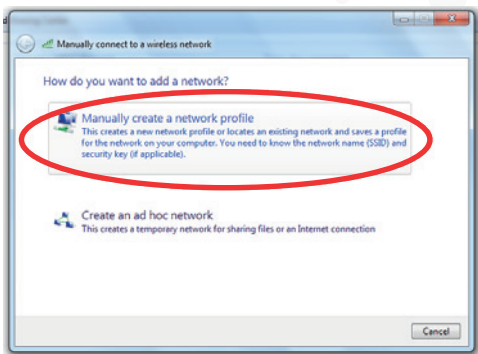
1. Right click the wireless icon in the taskbar (bottom right of screen)
2. From the pop up menu select **Open Network and Sharing Centre**



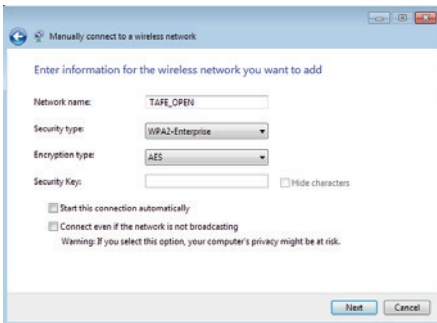
3. On the wireless network page click **add**



4. Select **Manually create a network profile**

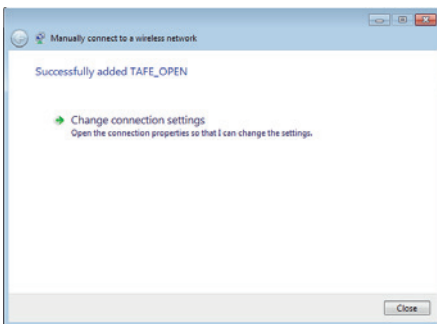


5. Create the wireless profile

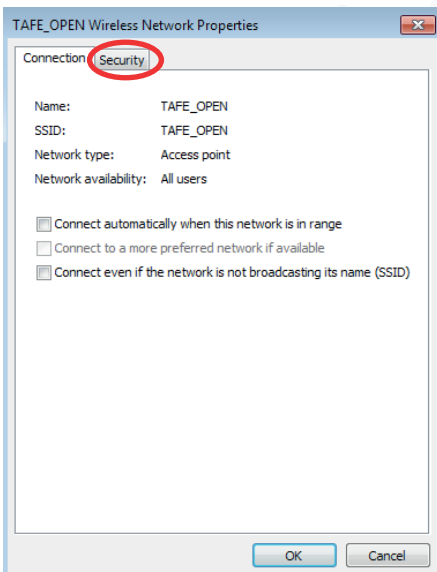


- a. Network Name - TAFE_OPEN (case sensitive)
- b. Security Type - WPA2-Enterprise
- c. Encryption Type - AES
- d. Un-check **Start this connection automatically**
- e. Click **next**

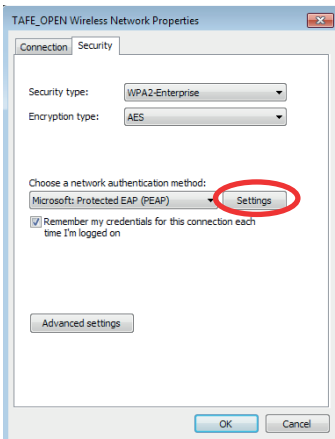
6. After creating the wireless profile select Change connection settings



7. On the network properties dialog box select the Security tab



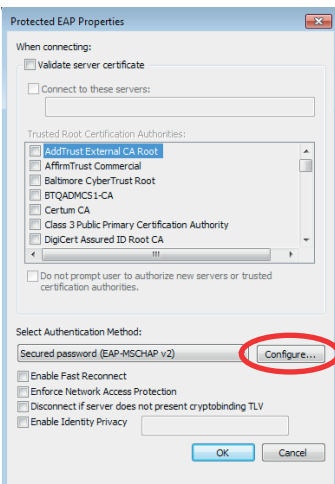
8. On the security tab click **Settings**



9. Un-Check **Validate server certificate**

10. Un-Check **Enable fast reconnect**

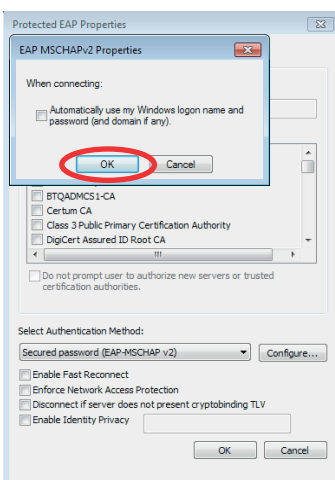
11. Next to 'Secure password EAP MSCHAP v2' click **Configure...**



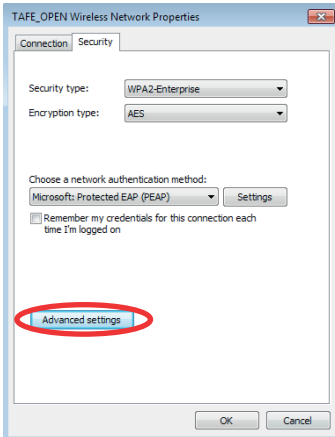
12. Un-Check **Automatically use my windows domain and password**

13. Click **OK**

14. Click on **OK** to close the Protected EAP dialog box



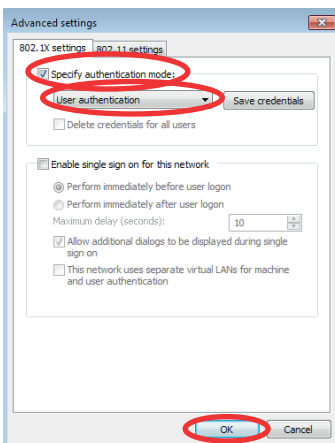
15. On the network properties dialog box select **Advanced settings**



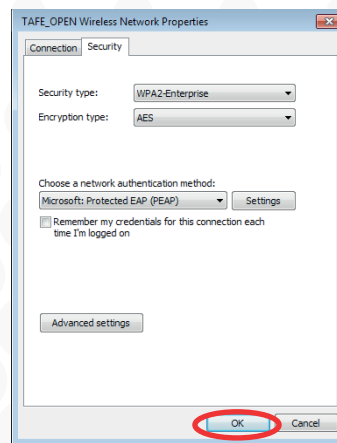
16. On the 802.1x tab check **Specify authentication mode**

17. Select **User authentication**

18. Click **OK**



19. On the network properties dialog box click **OK**



The wireless network policy configuration is complete and the device should now successfully connect to the TAFE_OPEN wireless network.

After selecting the TAFE_OPEN network the user will be prompted for network credentials, this is the user's network login credentials (same as used on TAFE computers). The username will need to be entered with the prefix, as detailed below, in order to ensure a successful authentication.

Username format:

Prefix	Username Example
username@student.tafe	123456789@student.tafe
username@staff.tafe	bloggsj@staff.tafe

